



## SECTION 8. OTHER DISTRICT FACILITIES





# CANYON VIEW HIGH SCHOOL

NOTRE DAME BLVD  
(BEYOND)



Canyon View High School

The District owns approximately 50 acres for a future high school campus. The need for the development of the site as a new high school is not anticipated within the horizon of the current demographic projections through 2030. Future updates to the Facilities Master Plan should review the need for the new high school in context of updated projections.

**Legend for Future High School**

- A Administration, Library
- B Industrial Arts, Home Ec, Woodworking
- C Multi Purpose, Music
- D Student Activity Center
- E Student Center
- F Gym, Weight Room
- G Locker Room
- H Classrooms
- J Classrooms
- K Classrooms
- L Maintenance



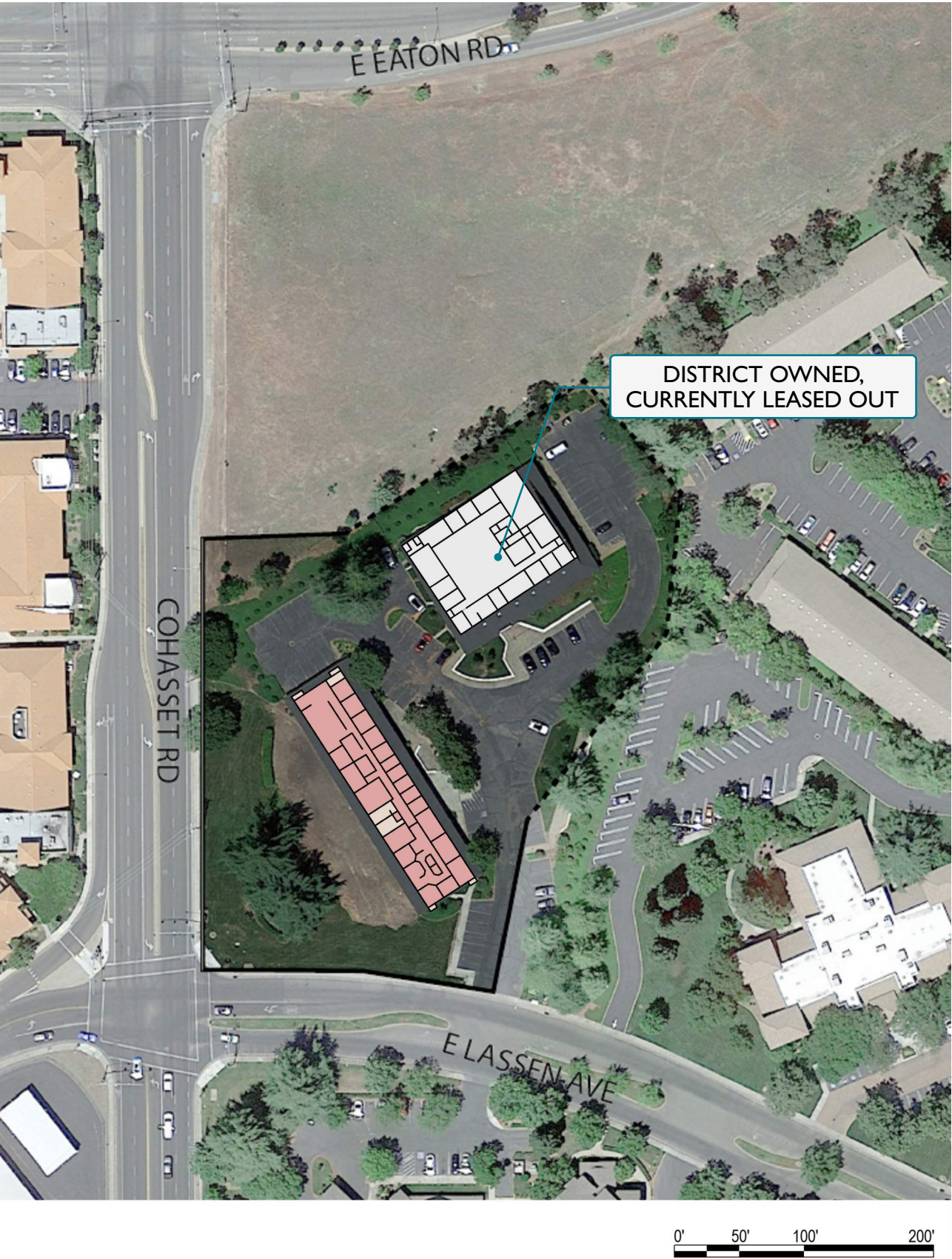
# HENSHAW GUYNN ELEMENTARY



The 13.02 acre Henshaw Guynn Site is currently owned by the District and reserved for when a new elementary school is needed. At this time, the demographic projections do not support the building of a new elementary school. When the need for the new elementary school is confirmed a full site planning process can be completed to create a final vision for this site in accordance with the needs of the education program.



# OAK BRIDGE ACADEMY



The District owns property in a former office complex. The property currently houses the Oak Bridge Academy and a small number of District offices. There is an existing building that is currently leased to a tenant, but is available for future needs of the District. Recent renovations at the occupied building were made to support educational programs for Oak Bridge Academy.



# DISTRICT ADMINISTRATIVE OFFICE



The District Office is located in a re-purposed elementary school that was built in the 1930s and in a relocatable building placed on the site for the District meetings. The main facility has aging electrical, mechanical, and technology systems. The District's main technology center is located at the northeast end of the main building. There was very little done to the facility to convert it to a district office from an elementary school. The main building has a large central corridor; the building's structural system will limit its long-term viability. To change the facility to match future needs would be difficult, due to those limitations. The existing facilities occupy a very large site, where the southeast section of the site remains a community playfield.

Renovation of this facility or relocation of District administration is not anticipated until a future phase of the Facilities Master Plan.



# DISTRICT CORPORATION YARD



The District's Corporation yard is a campus of permanent and portable buildings housing maintenance and operations, transportation and nutrition services for the District. While permanent facilities would likely improve the corporation yard, replacement of existing facilities was considered outside of the scope and schedule of this Facilities Master Plan as the District prioritizes spending on school campuses. A solar array is also part of the corporation yard.

A long-term goal for the District is the development of a central kitchen providing consolidated food preparation. While the vision for that project is also outside the planning horizon of the Facilities Master Plan, it is highlighted here to demonstrate that the corporation yard property is large enough to accommodate this vision. At the time of that implementation, it is recommended that the District develop a master plan for the site to adequately address site vehicular/bus circulation and parking, delivery access as well as any displacement of existing portable or storage buildings on the property.